

Power Drive

HSQ50



Product Description

- The Model HSQ50 power drive, constructed with a rugged cast aluminum housing, is designed for heavy-duty applications and daily use. It is ideal for mechanical, electrical and plumbing jobs. HSQ50 can be used to actuate pipe cutter, geared threader etc.

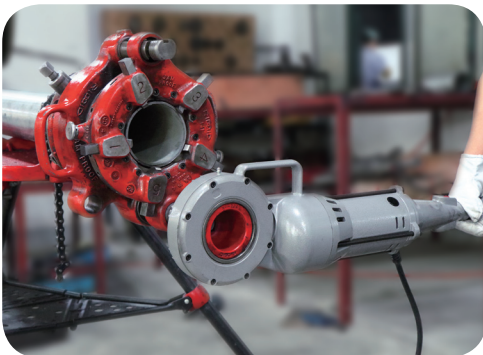
Specifications

- **Motor:** Universal, 1500W
- **Speed:** 32RPM (no load)
- **Gear head:** All Spur-gear Reduction.
Spring-loaded Adapter Pawl.
- **Body:** Hardened Steel Spindle Gear
Gear Case, Motor Housing and Handle are Cast Aluminum.
- **Threading Capacity:** 1/2"-2" (die heads to order separately)
- **Length:** 72cm



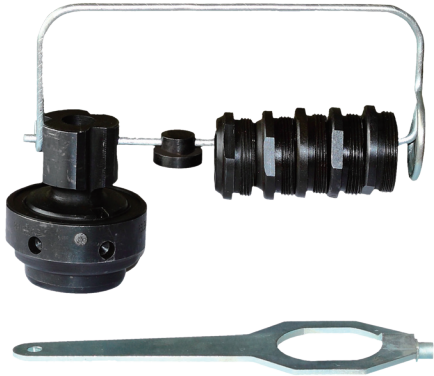
Ordering Information

Catalog No.	Model No.	Description	N.W(kg)
306301	HSQ50	Power drive 110V-60Hz	20
306302	HSQ50	Power drive 220V-50Hz	20



THREADING AND GROOVING

Nipple Chuck



819 Nipple Chuck Kit

- Holds short or close nipples for threading.
- For use with SQ50B1, SQ50C1, SQ80D, SQ80D1, SQ100D, SQ100D1, SQ50A, SQ80A, SQ100A, SQ50, SQ50D, SQ50E, SQ50F, SQ80C1, SQ100F.
- Standard Nipple Chuck includes insert and 5 adapters: ½", ¾", 1", 1¼", and 1½". (Nipple Chuck body serves as 2" Adapter.)

Ordering Information

Catalog No.	Model No.	Description	Pipe Capacity		N.W(kg)
			(in)	(mm)	
4581011	819	NPT Nipple Chuck	½-2	12-50	4.5
4581010	819	BSPT Nipple Chuck	½-2	12-50	4.5



Oiler



Product Description

- To work with portable threaders or other manual oiling required applications.
- Oil is filtered and recirculated through reservoir.
- An ergonomic 2-finger trigger design that reduces user fatigue.

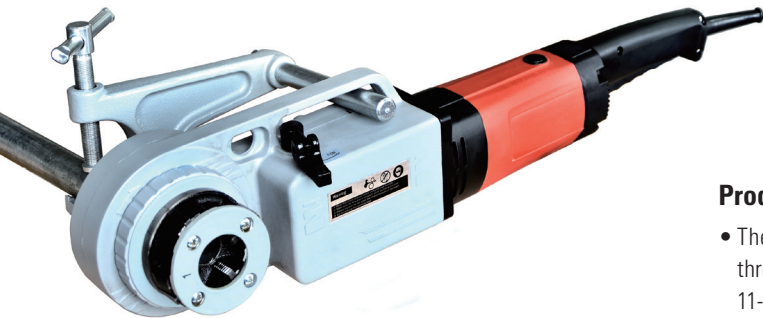
Ordering Information

Catalog No.	Model No.	Description	N.W (kg)
11102001		Oiler Complete	5
11102004		Oiler Gun with Hose	2



Portable Threading Machine

SQ30-2B



Product Description

- The SQ30-2B is a light weight and powerful portable threader. It is designed for threading ½"-2" pipe with 11-R Die Heads. The SQ30-2B is equipped with a full set of 11-R Die Heads, ½"-2", the SQ30-2B Support Arm and a durable Carrying Case. The SQ30-2B Power Drive is the perfect portable power drive for maintenance and repair workers, as well as service plumbers requiring 2" pipe capacity.



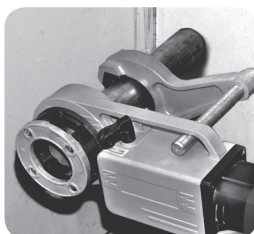
Model SQ30-2B with Support Arm, Die Heads and Carrying Case

Specifications

- **Capacity:** ½"-2" (15mm-50mm) pipe
- **Motor:** 1350W Universal 110V or 220V, 50/60Hz.
- **Switch:** Heavy-duty paddle-type switch with safety lock off device (automatically locks off when released). Separate mechanical transmission FOR/REV switch. Reverse 3-times faster than threading.
- **Gear Head:** Spur gear reduction/ring gear drive. All shafts, ball and needle bearing mounted. Permanently lubricated gear housing.
- **Gear Housing:** Die cast Aluminum.
- **Body & Handle:** Durable heavy-duty fiberglass reinforced plastic.
- **Spindle Speed:** 28 RPM for threading, 51 RPM reverse (No load)
- **Die Heads:** ½", ¾", 1", 1¼", 1½", 2" (Type 11R)
- Includes support arm.
- **Screw Threads:** NPT / BSPT
- **Dies Material:** Alloy standard, (HSS optional)
- **Die Head Adapter:** Used with ½" through 1¼" die heads.
- **weight:** 8 kg, power drive only.
- **Length:** 76 cm
- Approved by CSA and CE standards



Model SQ30-2B operating



Operation in close quarters

Ordering Information

Catalog No.	Model No.	Description	N.W(kg)
306202	SQ30-2B	110V ½"-2" NPT w/Case and Support Arm	22
306201	SQ30-2B	220V ½"-2" BSPT w/Case and Support Arm	22
Accessories			
30111028		Adapter	0.65
11101002		Support Arm	
11102001		Oiler (optional)	5
602201	H401	1/8"-6" TRISTAND chain vise (optional)	20

THREADING AND GROOVING

Threading Machine



Capacity

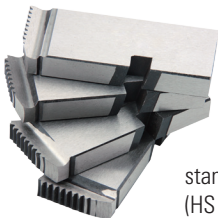
- **Pipe:** ¼"-1½" (8mm-40mm)
- **Bolt:** 12mm-33mm

Features

- Compact, light weight design.
- Powerful motor and transmission.
- Through die head oiling.

Technical Specifications

- **Motor:** 1500W universal, 50/60Hz
- **Switch:** ON/OFF heavy duty switch, foot switch and FOR/OFF/REV switch optional
- **Spindle Speed:** 56 RPM
- **Front Chuck:** Hammer type with replaceable rocker action jaw inserts.
- **Rear Centering Device:** Cam action.
- **Oiling:** Through die head.
- **Oil Pump:** Self-priming constant flow.



standard dies
(HS standard)



425 die head



reinforced cutting wheel

Standard dies

- ¼"-3/8" universal CS dies set.
- ½"-¾" universal CS dies set.
- 1"-2" universal CS dies set.

Ordering Information

Catalog No.	Model No.	Description	Spindle Speed RPM	Pipe Threading Capacity		Rod Threading Capacity	N.W (kg)
				in.	mm.	metric	
301503	SQ40	110V, 50/60Hz	38	¼-1½	8-40	M12-M33	38
302502	SQ40	220V, 50/60Hz	38	¼-1½	8-40	M12-M33	38

* Die head and dies, order separately.

Accessories

Catalog No.	Model No.	Description	N.W(kg)
	425	Die head, Quick-open (standard)	5.3
	424	Die head, Self-open (optional)	5.8
40601009		reinforced cutting wheel	

Power Drive

SQ50D



Features

- Speed Chuck
- Reversible 1500W universal motor.
- Recessed On/Off/Reverse switch.
- Approval by CSA and CE standards.
- Ideal for use with roll groover attachment and threading attachment.

Specifications

- **Motor:** 1500W Universal, reversible motor, single-phase, 110V or 220V, 50/60Hz.
- **Switch:** Heavy-duty FOR/OFF/REV and Integral Foot Switch.
- **Chuck:** Speed chuck with replaceable rocker-action jaws.
- **Spindle Speed:** 38 RPM (57 RPM available)
- **Rear Centering Device:** Cam-action turns with chuck.
- **Support Bar:** Heavy-duty

Ordering Information

Catalog No.	Model No.	Description	Spindle Speed RPM	N.W(kg)
302306	SQ50D PD	110V, 50/60Hz	38	55
302307	SQ50D PD	110V, 50/60Hz	57	55
302305	SQ50D PD	220V, 50/60Hz	38	55



With GC02 Groover



With YG12A Groover



With Threading Attachment

Threading Machine Complete



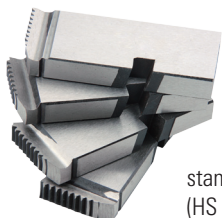
SQ50D

Standard Equipment

- Model SQ50D Power Drive with foot switch
- Quick-open die head, universal
- ½"-¾" universal HS dies set.
- 1"-2" universal HS dies set.
- **Cutter:** Capacity: 1/8"-2"(6mm-50mm) pipe
- **Reamer:** Positive-locking, 5-flute cone, right-hand 1/8"-2" (6mm-50mm).
- Carriage with lever.
- TRIPOD support stand
- Oiler

Ordering Information

Catalog No.	Model No.	Description	Spindle Speed RPM	Pipe Threading Capacity		Rod Threading Capacity	N.W(kg)
				in.	mm.	metric	
302302	SQ50D complete	110V, 50/60Hz	38	¼-2	6-50	M12-M45	80
302301	SQ50D complete	220V, 50/60Hz	38	¼-2	6-50	M12-M45	80



standard dies (HS standard)



425 die head



reinforced cutting wheel



Model SQ50D with "T" Transporter (for optional)

Threading Machine



SQ50

Capacity

- **Pipe:** ¼"-2" (8mm-50mm)
- **Bolt:** 12mm-45mm

Features

- Compact, light weight design.
- Powerful motor and transmission.
- Through die head oiling.
- Approved by CSA and CE standards.

Technical Specifications

- **Motor:** 1500W universal, 50/60Hz
- **Switch:** ON/OFF heavy duty switch, foot switch and FOR/OFF/REV switch optional
- **Spindle Speed:** 38 RPM
- **Front Chuck:** Hammer type with replaceable rocker action jaw inserts.
- **Rear Centering Device:** Cam action.
- **Oiling:** Through die head.
- **Oil Pump:** Self-priming constant flow.



standard dies
(HS standard)

Standard dies

- ½"-¾" universal HS dies set.
- 1"-2" universal HS dies set.



428 die head (standard)

Ordering Information

Catalog No.	Model No.	Description	Spindle Speed RPM	Pipe Threading Capacity		Rod Threading Capacity	N.W (kg)
				in.	mm.	metric	
302502	SQ50	110V, 50/60Hz	38	¼-2	8-50	M12-M45	67
302501	SQ50	220V, 50/60Hz	38	¼-2	8-50	M12-M45	67

* Die head and dies, order separately.



reinforced cutting wheel

Accessories

Catalog No.	Model No.	Description	N.W(kg)
	428	Die head, Quick-open (standard)	5.6
	425	Die head, Quick-open (optional)	5.3
	424	Die head, Self-open (optional)	5.8
40601009		reinforced cutting wheel	

THREADING AND GROOVING

Threading Machine

SQ50E



Capacity

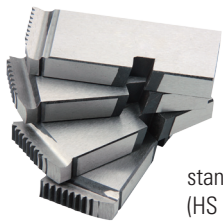
- Pipe: ¼"-2" (8mm-50mm)
- Bolt: 12mm-45mm

Features

- Heavy-duty proven performance.
- Fast transport and set-up.
- Self-Contained Oil System with adjustable flow control.
- Approved by CE standards.

Technical Specifications

- **Motor:** 1500W universal, 50/60Hz
- **Switch:** ON/OFF heavy duty switch, foot switch and FOR/OFF/REV switch are optional
- **Spindle Speed:** 38 RPM.
- **Front Chuck:** Hammer type with replaceable rocker action jaw inserts.
- **Rear Centering Device:** Cam action.
- **Oiling System:** Through die head, with intergral oil reservoir.
- **Pump:** Self-priming adjustable flow, gerotor pump.



standard dies
(HS standard)



424 die head (standard)



reinforced cutting wheel



651 stand (optional)

Standard Dies

- ½"-¾" universal HS dies set.
- 1"-2" universal HS dies set.

Ordering Information

Catalog No.	Model No.	Description	Spindle Speed RPM	Pipe Threading Capacity		Rod Threading Capacity*	N.W (kg)
				in.	mm.	metric	
302312	SQ50E	110V, 50/60Hz	38	¼-2	8-50	M12-M45	75
302311	SQ50E	220V, 50/60Hz	38	¼-2	8-50	M12-M45	75

* Die head and dies, order separately.

Accessories

Catalog No.	Model No.	Description	N.W(kg)
	425	Die head, Quick-open (optional)	5.3
	424	Die head, Self-open (standard)	5.8
11001004	651	Pneumatic Folding Wheel Stand (optional)	22
40601003		reinforced cutting wheel	

Threading Machine



SQ50F

Capacity

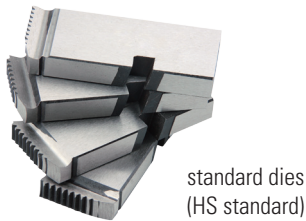
- **Pipe:** ¼"-2" (8mm-50mm)
- **Bolt:** 12mm-45mm

Features

- Heavy-duty proven performance.
- 1.5KW induction motor ensures quiet operation with high speed.
- Self-Contained Oil System constant flow.
- Approved by CSA and CE standards.

Technical Specifications

- **Motor:** 1500W induction, 50/60Hz
- **Switch:** ON/OFF heavy duty switch, foot switch and FOR/OFF/REV switch are optional
- **Spindle Speed:** 38 RPM.
- **Front Chuck:** Hammer type with replaceable rocker action jaw inserts.
- **Rear Centering Device:** Cam action.
- **Oiling System:** Through die head, with intergral oil reservoir.
- **Pump:** Self-priming constant flow



standard dies
(HS standard)



425 die head



reinforced cutting wheel

Standard Dies

- ½"-¾" universal HS dies set.
- 1"-2" universal HS dies set.

Ordering Information

Catalog No.	Model No.	Description	Spindle Speed RPM	Pipe Threading Capacity		Rod Threading Capacity*	N.W (kg)
				in.	mm.	metric	
302317	SQ50F	110V, 50/60Hz	36	¼-2	8-50	M12-M45	77
302316	SQ50F	220V, 50/60Hz	36	¼-2	8-50	M12-M45	77

* Die head and dies, order separately.

Accessories

Catalog No.	Model No.	Description	N.W(kg)
	425	Die head, Quick-open (optional)	5.3
	424	Die head, Self-open (optional)	5.8
40601003		reinforced cutting wheel	

THREADING AND GROOVING

Threading Machine

SQ80C1



Capacity

- **Pipe:** ¼"-3" (8mm-80mm)
- **Bolt:** 12mm-45mm

Features

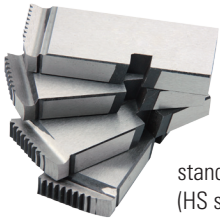
- Heavy-duty proven performance.
- Fast transport and set-up.
- Self-Contained Oil System with adjustable flow control.
- Approved by CE standards.

Technical Specifications

- **Motor:** 1500W universal, 50/60Hz
- **Switch:** ON/OFF heavy duty switch, foot switch and FOR/OFF/REV switch are optional
- **Spindle Speed:** 32 RPM.
- **Front Chuck:** Hammer type with replaceable rocker action jaw inserts.
- **Rear Centering Device:** Cam action.
- **Oiling System:** Through die head, with intergral oil reservoir.
- **Pump:** Self-priming adjustable flow, gerotor pump.



reinforced cutting wheel



standard dies
(HS standard)



432 die head



424 die head



651 stand (optional)

Standard Dies

- ½"-¾" universal HS dies set.
- 1"-2" universal HS dies set.
- 2 1/2"-3" universal HS dies set.

Ordering Information

Catalog No.	Model No.	Description	Spindle Speed RPM	Pipe Threading Capacity		Rod Threading Capacity	N.W (kg)
				in.	mm.	metric	
303301	SQ80C1	110V, 60Hz	32	¼-3	8-80	M12-M45	74
303302	SQ80C1	220V, 50Hz	32	¼-3	8-80	M12-M45	74

* Die head and dies, order separately.

Accessories

Catalog No.	Model No.	Description	N.W(kg)
	425	Die head, Quick-open (optional), ¼"-2"	5.3
	424	Die head, Self-open (standard), ¼"-2"	5.8
	432	Die head, Self-open 2½"-3"	6
11001004	651	Pneumatic Folding Wheel Stand (optional)	22
40601008		reinforced cutting wheel	

Threading Machine

SQ100F



Capacity

- **Pipe:** ¼"-4" (8mm-100mm)
- **Bolt:** 12mm-45mm

Features

- Heavy-duty proven performance.
- Threads ¼"-¾" pipe at 36RPM, 1"-2" at 20RPM, 2½"-4" at 11RPM.
- An induction motor ensures sound levels well when using.
- A special capacitor-start / capacitor run motor allows the machine to thread where voltage drop is experienced.
- Approved by CSA and CE standards.

Technical Specifications

- **Motor:** 1500W induction, 50/60Hz, single phase.
- **Switch:** ON/OFF heavy duty switch, foot switch and FOR/OFF/REV switch is optional.
- **Spindle Speed:** 36/20/11 RPM.
- **Front Chuck:** Hammer type with replaceable rocker action jaw inserts.
- **Rear Centering Device:** Cam action.
- **Oiling System:** Through die head, with integral oil reservoir.

Standard Dies

- ½"-¾" universal HS dies set.
- 1"-2" universal HS dies set.
- 2 1/2"-4" universal HS dies set.

Ordering Information

Catalog No.	Model No.	Description	Spindle Speed RPM	Pipe Threading Capacity		Rod Threading Capacity	N.W (kg)
				in.	mm.	metric	
304301	SQ100F	110V, 50/60Hz	36/20/11	¼-4	8-100	M12-M45	140
304302	SQ100F	220V, 50/60Hz	36/20/11	¼-4	8-100	M12-M45	140

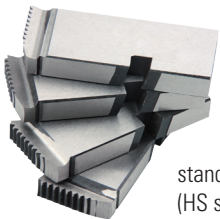
* Die head and dies, order separately.

Accessories

Catalog No.	Model No.	Description	N.W(kg)
	443	Die head, Self-open, ¼"-2"	6.2
	444	Die head, Self-open, 2½"-4"	14.4
4581011	819	Nipple Chuck (optional)	4.5
40601008		reinforced cutting wheel	



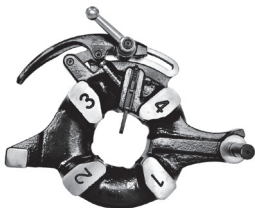
reinforced cutting wheel



standard dies (HS standard)



444 die head



443 die head



672A stand (optional)

THREADING AND GROOVING

Threading Machine

SQ100F-L



Capacity

- **Pipe:** ½"-4" (8mm-100mm)
- **Bolt:** 10mm-33mm

Features

- Heavy-duty proven performance.
- Threads ½"-¾" pipe at 36RPM, 1"-2" at 20RPM, 2½"-4" at 11RPM.
- An induction motor ensures sound levels well when using.
- A special capacitor-start / capacitor run motor allows the machine to thread where voltage drop is experienced.

Technical Specifications

- **Motor:** 1500W induction, 50/60Hz, single phase.
- **Switch:** ON/OFF heavy duty switch, foot switch and FOR/OFF/REV switch is optional.
- **Spindle Speed:** 36/20/11 RPM.
- **Front Chuck:** Hammer type with replaceable rocker action jaw inserts.
- **Rear Centering Device:** Cam action.
- **Oiling System:** Through die head, with intergral oil reservoir.

Standard Dies

- ½"-¾" universal HS dies set.
- 1"-2" universal HS dies set.
- 2 1/2"-4" universal HS dies set.

Ordering Information

Catalog No.	Model No.	Description	Spindle Speed RPM	Pipe Threading Capacity		Rod Threading Capacity	N.W (kg)
				in.	mm.	metric	
304306	SQ100F-L	110V, 50/60Hz	36/20/11	½-4	8-100	M10-M33	140
304307	SQ100F-L	220V, 50/60Hz	36/20/11	½-4	8-100	M10-M33	140

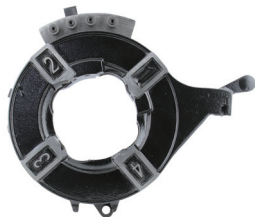
* Die head and dies, order separately.

Accessories

Catalog No.	Model No.	Description	N.W(kg)
	428	Die head, Self-open, ½"-2"	5.6
	447	Die head, Self-open, 2½"-4"	9
4581011	819	Nipple Chuck (optional)	4.5
40601008		reinforced cutting wheel	



428 die head



447 die head



reinforced cutting wheel



672A stand (optional)

Threading Machine

SQ50A



SQ100A



SQ80A



Ordering Information

Catalog No.	Model No.	Description	Power Watts	Spindle Speed RPM	Pipe Threading Capacity		N.W (kg)
					in.	mm.	
302117	SQ50A	110V, 60Hz	1000	28	1/2-2	15-50	60
302101	SQ50A	220V, 50Hz	1000	28	1/2-2	15-50	60
303103	SQ80A	110V, 60Hz	1100	28/14	1/2-3	15-80	100
303101	SQ80A	220V, 50Hz	1100	28/14	1/2-3	15-80	100
304101	SQ100A	110V, 60Hz	1100	28/12	1/2-4	15-100	140
304111	SQ100A	220V, 50Hz	1100	28/12	1/2-4	15-100	140

THREADING AND GROOVING

Threading Machine

SQ50B1



SQ100D1



SQ80D1



Ordering Information

Catalog No.	Model No.	Description	Power Watts	Spindle Speed RPM	Pipe Threading Capacity		N.W (kg)
					in.	mm.	
302105	SQ50B1	110V, 60Hz	750	23	1/2-2	15-50	60
302106	SQ50B1	220V, 50Hz	750	23	1/2-2	15-50	60
303205	SQ80D1	110V, 60Hz	750	26/11	1/2-3	15-80	100
303206	SQ80D1	220V, 50Hz	750	26/11	1/2-3	15-80	100
304108	SQ100D1	110V, 60Hz	750	24/10	1/2-4	15-100	140
304107	SQ100D1	220V, 50Hz	750	24/10	1/2-4	15-100	140

Threading Machine

SQ50C1



SQ100D



SQ80D




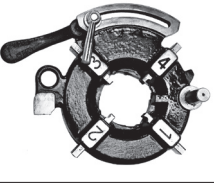
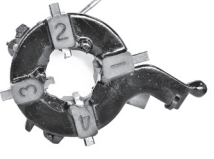





Ordering Information



Catalog No.	Model No.	Description	Power Watts	Spindle Speed RPM	Pipe Threading Capacity		N.W (kg)
					in.	mm.	
302118	SQ50C1	110V, 60Hz	900	23	1/2-2	15-50	60
302119	SQ50C1	220V, 50Hz	900	23	1/2-2	15-50	60
303301	SQ80D	110V, 60Hz	900	26/11	1/2-3	15-80	100
303302	SQ80D	220V, 50Hz	900	26/11	1/2-3	15-80	100
304108	SQ100D	110V, 60Hz	900	24/10	1/2-4	15-100	140
304107	SQ100D	220V, 50Hz	900	24/10	1/2-4	15-100	140



THREADING AND GROOVING

Threading Die Heads List

Image	Model No.	For Machines	How Open	Dies type	Capacity	Ref. No.	N.W(kg)
	420	SQ50B1	Receding Self-open	100 type	1/2"-2"	10601003	5.6
	424	SQ40/SQ50/ SQ50D/SQ50E/ SQ50F/SQ50A/ SQ50C1/SQ80C1	Self-open	RIDGID	1/8"-2"	BSPT: 10601012 NPT: 10601013	5.8
	425	SQ40/SQ50/ SQ50D/SQ50E/ SQ50F/SQ50A/ SQ50C1/SQ80C1	Quick-open	RIDGID	1/8"-2"	BSPT: 10601009 NPT: 10601010	5.3
	428	SQ50/SQ50A/SQ50C1/ SQ80C1/SQ80D/ SQ100F-L	Quick-open	REX	1/2"-2"	BSPT: 10602009 NPT: 10602010	5.6
	430	SQ80D1	Receding Self-open	100 type	1/2"-2"	10602001	5.9
	431	SQ80D1	Receding Self-open	100 type	2 1/2"-3"	10602002	7.4
	432	SQ80C1	Self-open	RIDGID	2 1/2"-3"	BSPT: 10602011 NPT: 10602012	6
	433B	SQ80C1/SQ80D/ SQ80A	Quick-open	REX	2 1/2"-3"	10602013	4.9

THREADING AND GROOVING

Image	Model No.	For Machines	How Open	Dies type	Capacity	Ref. No.	N.W(kg)
	440	SQ100D1	Receding Self-open	100 type	1/2"-2"	10603001	6.5
	441	SQ100D/SQ100D1	Receding Self-open	100 type / REX	2 1/2"-4"	10603002	8.8
	442A	SQ100D	Quick-open	REX	1/2"-2"	10603004	6.6
	443	SQ100F	Self-open	RIDGID	1/4"-2"	BSPT: 10603011 NPT: 10603010	6.2
	444	SQ100F	Receding Self-open	RIDGID	2 1/2"-4"	BSPT: 10603009 NPT: 10603008	14.4
	447	SQ100F-L	Quick-open	REX	2 1/2"-4"	10603007	9

	422	SQ50C1	Quick-open	F4		10601006	
	442	SQ100D	Quick-open	F4		10603003	

* F4 type die heads, only offer as spare parts.